

### ADDRESS

---

**The COAST Resort and Spa Koh Samui**  
44/134 Moo 1, Maenam Beach, Koh Samui,  
84330 Suratthani, Thailand

Tel +66 (0) 77 953 035  
Fax +66 (0) 77 953 036

reservation@thecoastresorts.com  
www.thecoastsamui.com

### SHORT DESCRIPTION

---

Minimalist design Beach Resort for guests aged over 16 years to give guaranteed peace and quiet for a relaxing holiday.

### ROOM TYPES - 125 Units

---

21 DELUXE ROOMS	37 m <sup>2</sup>
34 DELUXE SEA VIEW ROOMS	37 m <sup>2</sup>
21 DELUXE PLUNGE POOL ROOMS	47 m <sup>2</sup>
03 DELUXE SUITES	75 m <sup>2</sup>
10 DELUXE SEA VIEW SUITES	75 m <sup>2</sup>
02 GARDEN PLUNGE POOL SUITES	95 m <sup>2</sup>
13 JUNIOR SPA-BATH VILLA	43 m <sup>2</sup>
08 GARDEN POOL VILLAS	64 m <sup>2</sup>
13 BEACH POOL VILLAS	92 m <sup>2</sup>

### FACILITIES

---

#### BEACH RESTAURANT

Seating Capacity: 80  
Service Hours: 06:00h – 22.30h

#### SWIM-UP POOL BAR

Seating Capacity: 20  
Service Hours: 10:00h – 22.30h

#### 24HR GYM

Service Hours: 24 hours

#### GYM & ROOFDECK

Courses for endurance and strength,  
Sunrise and Sunset Yoga

### SALES CONTACT

---

#### ATTAPORN SRIMASAP (BOON)

Assistant Director of Sales

Tel +66 (0) 89 255 8228  
sales@thecoastresorts.com

### LOCATION

---

Maenam Beach, Koh Samui with views of Koh Phangan. 20-minute drive from the airport and 5-minute drive from Bophut Fisherman's Village.

### GENERAL AMENITIES

---

- Wall-mounted Satellite TV / In-House Movie Channels
- Wi-Fi & LAN / Internet / Telephone
- Safety Box
- Work Desk & Chair
- Wall-mounted USB-Charger
- Terrace / Outdoor Table & Chair Set
- Full Bathroom Amenities / Cosmetic Mirror
- Bathrobes / Slippers / Hairdryer
- Tea and coffee making facilities
- Smoke Detector
- Closet / Umbrella / Flashlight / Iron / Laundry Bag

### OTHER SERVICES

---

24hrs Reception & Security  
International Guest Service Team  
Free Porter/Concierge  
Transfers · Shuttles · Tour & Excursion

Scooter & Car Rental · Parking Spot  
Room Service · Turn-Down Service  
WIFI · iMac Station  
Laundry

DELUXE ROOMS • 21 Units • 37 m<sup>2</sup>



- Size** 27 m<sup>2</sup> bedroom and entrance corridor  
04 m<sup>2</sup> bathroom (with shower)  
06 m<sup>2</sup> balcony
- Location** 2nd floor of a 4-storey hotel building
- View** resort areal and gardens
- Bedding** 13 x 01 king / 08 x 02 single beds (twin)



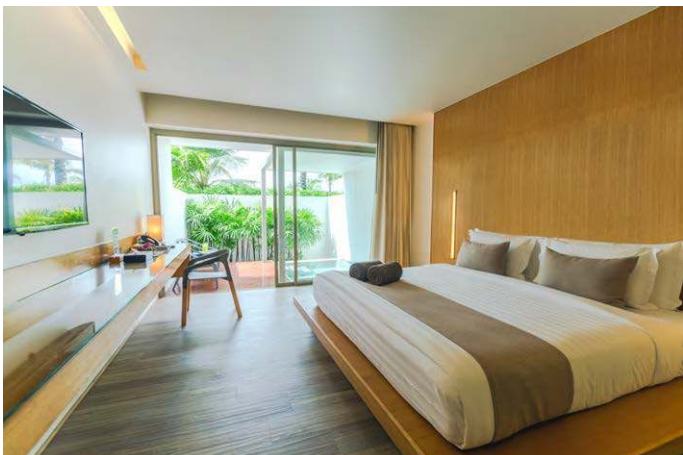
DELUXE SEA VIEW ROOMS • 34 Units • 37 m<sup>2</sup>



- Size** 27 m<sup>2</sup> bedroom and entrance corridor  
04 m<sup>2</sup> bathroom (with shower)  
06 m<sup>2</sup> balcony
- Location** 3rd and 4th floors of a 4-storey hotel building
- View** resort gardens and sea view
- Bedding** 26 x 01 king / 08 x 02 single beds (twin)



DELUXE PLUNGE POOL ROOMS • 21 Units • 47 m<sup>2</sup>



- Size** 27 m<sup>2</sup> bedroom and entrance corridor  
04 m<sup>2</sup> bathroom (with shower)  
16 m<sup>2</sup> terrace and sunken plunge pool
- Location** units on the ground floor of a 4-storey building
- View** private terrace
- Bedding** 02 x 01 king
- Specials** sunken plunge pool



**DELUXE SUITE · 03 Units · 75 m<sup>2</sup>**



**Size** 21 m<sup>2</sup> bedroom  
32 m<sup>2</sup> living room and kitchenette  
10 m<sup>2</sup> bathroom (with bathtub and double-shower)  
12 m<sup>2</sup> balcony

**Location** 2nd floor of a 4-storey hotel building  
**View** resort gardens  
**Bedding** 02 x 01 king / 01 x 02 single beds (twin)  
**Specials** coffee capsule machine, microwave, sofa



**DELUXE SEA VIEW SUITES · 10 Units · 75 m<sup>2</sup>**



**Size** 21 m<sup>2</sup> bedroom  
32 m<sup>2</sup> living room and kitchenette  
10 m<sup>2</sup> bathroom (with bathtub and double-shower)  
12 m<sup>2</sup> balcony

**Location** 3rd and 4th floors of a 4-storey hotel building  
**View** resort gardens and sea view  
**Bedding** 07 x 01 king / 03 x 02 single beds (twin)  
**Specials** coffee capsule machine, microwave, sofa



**GARDEN PLUNGE POOL SUITES · 02 UNITS · 95 m<sup>2</sup>**



**Size** 21 m<sup>2</sup> bedroom  
32 m<sup>2</sup> living room and kitchenette  
10 m<sup>2</sup> bathroom (with bathtub and double-shower)  
32 m<sup>2</sup> double-terrace with sunken plunge pool

**Location** corner units on ground floor of a 4-storey building  
**View** private terrace  
**Bedding** 02 x 01 king  
**Specials** double-terrace with sunken plunge pool, two bean beds  
bath tub, kitchenette, coffee capsule machine, microwave, sofa



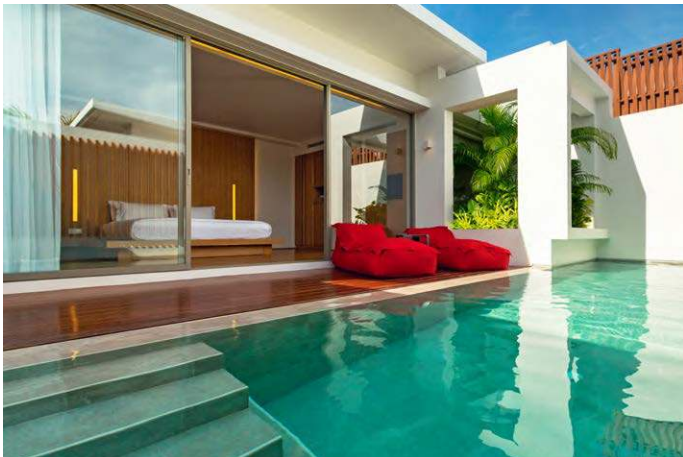
JUNIOR SPA-BATH VILLAS • 13 Units • 43 m<sup>2</sup>



- Size** 21 m<sup>2</sup> bedroom  
04 m<sup>2</sup> bathroom (with shower)  
18 m<sup>2</sup> terrace and raised double spa-bath
- Location** stands alone units within the grounds of the resort
- View** private terrace and spa bath
- Bedding** 13 x 01 king
- Specials** raised double spa-bath



GARDEN POOL VILLAS • 08 Units • 64 m<sup>2</sup>



- Size** 22 m<sup>2</sup> bedroom  
07 m<sup>2</sup> bathroom (with double-shower)  
15 m<sup>2</sup> terrace  
20 m<sup>2</sup> private pool
- Location** stands alone units within the grounds of the resort
- View** private terrace and pool
- Bedding** 06 x 01 king / 02 x 02 single beds (twin)
- Specials** private pool, two bean beds, coffee capsule machine



BEACH POOL VILLAS • 13 Units • 92 m<sup>2</sup>



- Size** 27 m<sup>2</sup> bedroom and entrance corridor  
08 m<sup>2</sup> bathroom (with double-shower)  
39 m<sup>2</sup> terrace  
18 m<sup>2</sup> private pool
- Location** stands alone units beachfront of the resort
- View** sea view, beach, koh phangan
- Bedding** 13 x 01 king
- Specials** private pool, two bean beds and umbrella chair set, coffee capsule machine

